



## Our Mission

Support a sustainable community pharmacy network that deploys evidence-based interventions to reduce the number of opioid overdoses in Wisconsin



**School of Pharmacy**  
UNIVERSITY OF WISCONSIN-MADISON

## Our Vision

Healthier, happier communities that are empowered to work with pharmacy partners to deliver local solutions to their most pressing and sensitive healthcare challenges

# Partners



School of Pharmacy  
UNIVERSITY OF WISCONSIN-MADISON



WISCONSIN DEPARTMENT  
of HEALTH SERVICES



Rural Wisconsin  
Health Cooperative



Pharmacy Society  
of Wisconsin



WISCONSIN  
**PSYCHIATRIC**  
ASSOCIATION



# Advisory Board Members

- Gina Malagold, MA, MS, PhD – Georgetown University
- Radley Kamps, PhD – Grant Regional Health Center
- Michelle Bauer, RN BSN CLC – Sauk County
- Sarah Sorum, PharmD, CAE – Pharmacy Society of Wisconsin (PSW)
- Ritu Bhatnagar, MD, MPH – Wisconsin Society of Addiction Medicine
- Jill M. Gamez, MSPH, MBA, CSAC, PS – Arbor Place

# Advancing Opioid Use Disorder Treatment Through Community Pharmacies

Patient and  
Drug Safety

Medication-  
Assisted  
Therapies

Overdose  
Prevention and  
Reversal

Biologics for  
Screening and  
Treatment



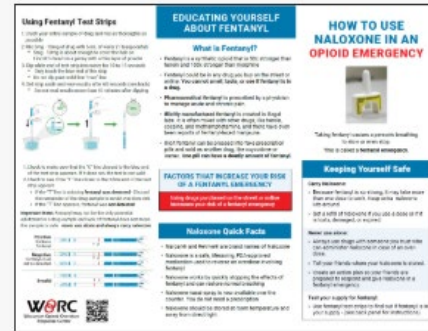
Patient and Drug Safety

Overdose Prevention and Reversal

Medication-Assisted Therapies

Biologics for Screening and Treatment

## Naloxone & Fentanyl Risk Brochure (trifold)



## Medication Disposal Options Brochure (trifold)



## Injectable Naltrexone Brochure (trifold)



## Medications for Opioid Use Disorder Brochure (trifold)



- Educational Pamphlets
- Patient-Friendly Terminology
- Multiple Languages
- Pharmacy Resource Network
  - 28 Pharmacies\*

\*as of April 1st



Patient and  
Drug Safety

Overdose  
Prevention and  
Reversal

Medication-  
Assisted  
Therapies

Biologics for  
Screening and  
Treatment

### Using Fentanyl Test Strips

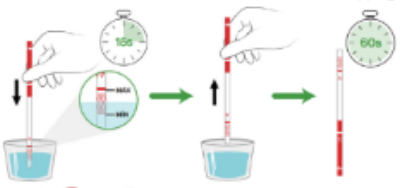
1. Crush your entire sample of drug and mix as thoroughly as possible
2. Mix 5mg - 10mg of drug with 5 mL of water (1 teaspoonful)
  - 5mg - 10mg is about enough to cover the hair on Lincoln's head on a penny with a thin layer of powder
3. Dip white end of test strip into water for 10 to 15 seconds
  - Only touch the blue end of the strip
  - Do not dip past solid line "max" line
4. Set strip aside and view results after 60 seconds (see back)
  - Do not read results more than 10 minutes after dipping



For more ways to reduce the risk of opioid overdose visit: [woorc.pharmacy.wisc.edu](http://woorc.pharmacy.wisc.edu)

### Using Xylazine Test Strips

1. Crush your entire sample of drug and mix as thoroughly as possible
2. Mix 5mg - 10mg of drug with 5 mL of water (1 teaspoonful)
  - 5mg - 10mg is about enough to cover the hair on Lincoln's head on a penny with a thin layer of powder
3. Dip white end of test strip into water for 10 to 15 seconds
  - Only touch the red end of the strip
  - Do not dip past solid line "max" line
4. Set strip aside and view results after 60 seconds (see back)
  - Do not read results more than 10 minutes after dipping



For more ways to reduce the risk of opioid overdose visit: [woorc.pharmacy.wisc.edu](http://woorc.pharmacy.wisc.edu)



➤ Naloxone via Veteran-Facing and Low-Income Serving Pharmacy Clinics

➤ Fentanyl and Xylazine Test Strips via Pharmacy Resource Network

➤ Mail back Envelopes for Destruction via Pharmacy Resource Network

Patient and  
Drug Safety

Overdose  
Prevention and  
Reversal

Medication-  
Assisted  
Therapies

Biologics for  
Screening and  
Treatment



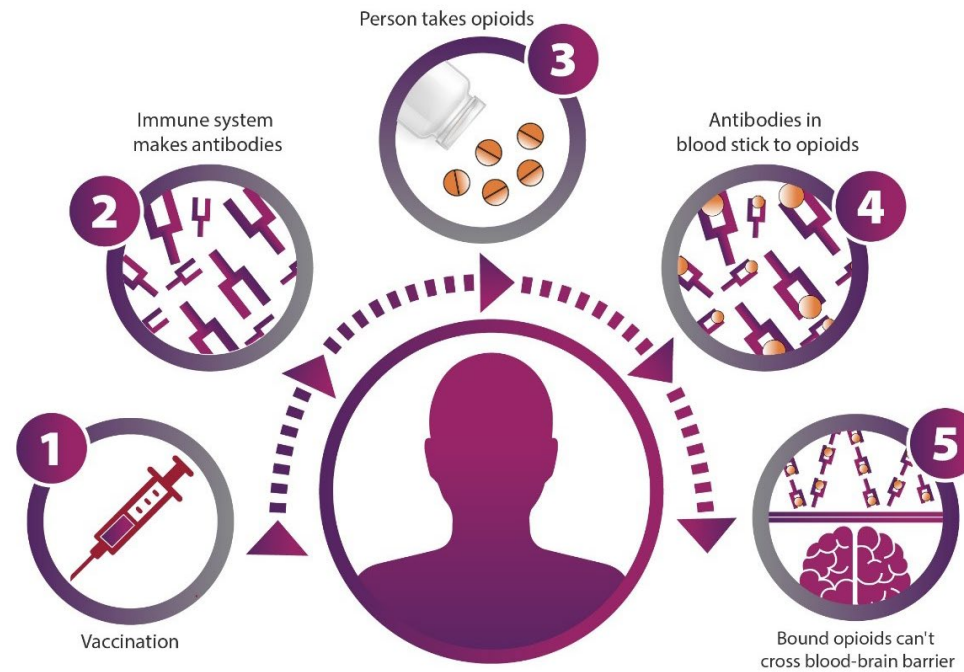
- Non-Vaccine Injectable Training for Pharmacists
- Pharmacist-Led Peer Education on Buprenorphine Prescribing changes
- Guidance on Implementing Pharmacist Provider Status for Administration and Support
- Development of Local Referral and Supportive Care Networks

Patient and  
Drug Safety

Overdose  
Prevention and  
Reversal

Medication-  
Assisted  
Therapies

Biologics for  
Screening and  
Treatment



- Antibodies Against Morphine-like, Fentanyl-like, and Nitazine-like compounds
- Assessment for Recognition of Novel Opioid Structures
- Pre-Clinical Measurement of Reward and Overdose Blockade



# Drug Court Engagement Opportunities

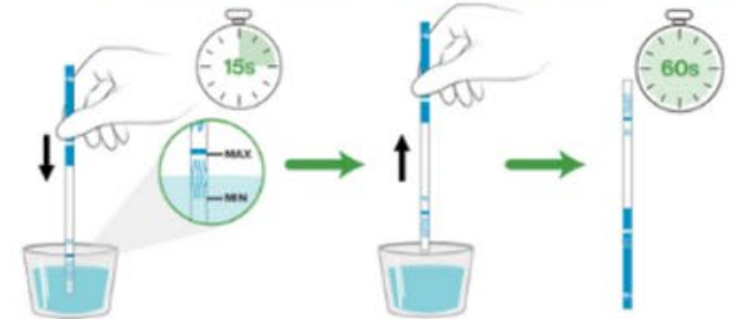
- Establish referral networks
  - Local connections
    - Hospital clinics
    - Community pharmacies
- Specific opportunities
  - Jefferson County/Tribal Nations



# VISIT OUR WEBSITE

## Using Fentanyl Test Strips

1. Crush your entire sample of drug and mix as thoroughly as possible
2. Mix 5mg - 10mg of drug with 5 mL of water (1 teaspoonful)
  - 5mg - 10mg is about enough to cover the hair on Lincoln's head on a penny with a thin layer of powder
3. Dip white end of test strip into water for 10 to 15 seconds
  - Only touch the blue end of the strip
  - Do not dip past solid line "max" line
4. Set strip aside and view results after 60 seconds (see back)
  - Do not read results more than 10 minutes after dipping



**WOORC**  
Wisconsin Opioid Overdose  
Response Center

For more ways to reduce the risk  
of opioid overdose visit:  
[woorc.pharmacy.wisc.edu](http://woorc.pharmacy.wisc.edu)

Invalid



**WOORC**  
Wisconsin Opioid Overdose  
Response Center

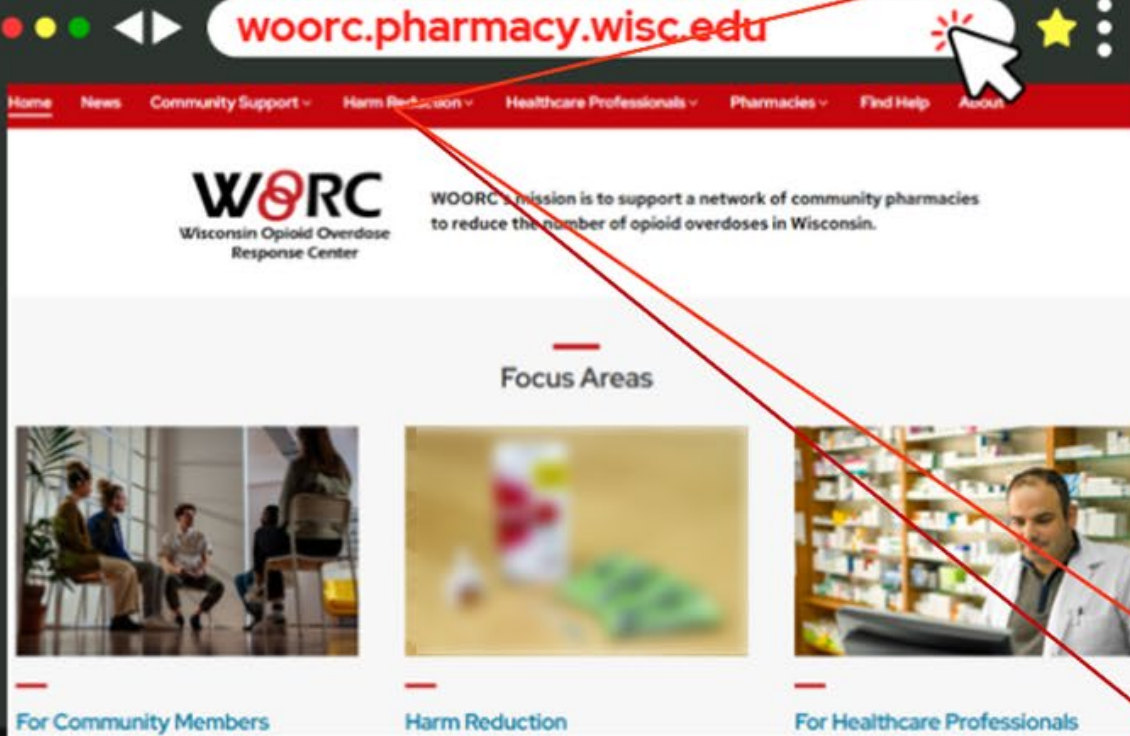
To learn more about  
fentanyl risks visit:  
[woorc.pharmacy.wisc.edu](http://woorc.pharmacy.wisc.edu)



Its

blue end  
not valid  
of the

- Discard  
dose risk  
ed  
al  
not mean  
naloxone








School of Pharmacy  
UNIVERSITY OF WISCONSIN-MADISON


# Learn More On Our Website

### Focus Areas




#### For Community Members

- What are opioids?
- Why should I know about them?
- Am I at risk for an overdose?
- Should I get help?



#### Harm Reduction

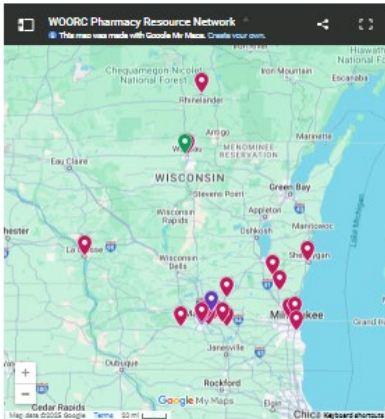
- What is harm reduction?
- Can harm reduction help me or my loved one stay safe?
- Where can I get supplies if I need them?




#### For Healthcare Professionals

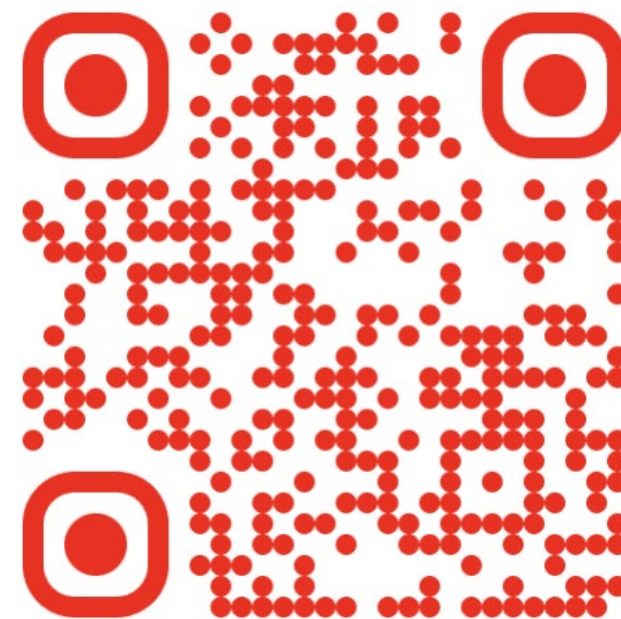
- How can I help my patients who use opioids??
- What tools can I use to prevent overdoses?
- How can I combat stigma?

Use the interactive map below to locate **pharmacies** across Wisconsin that offer opioid overdose resources.



Click the map below to find other kinds of care for people who use opioids such as **clinics, treatment centers, and community organizations** by state region.





[woorc.pharmacy.wisc.edu](http://woorc.pharmacy.wisc.edu)